

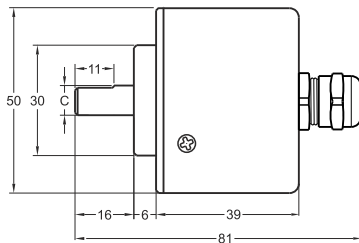
Magnetic Incremental Encoder

- 50 mm case diameter
- Magnetic incremental encoder
- 2 - 4 - 8 - 16 - 25 - 32 - 40 - 50 - 64 - 80 - 100 - 125, 128 - 160 - 200 - 250 - 256 - 400 - 500 - 512 ppr.
- IP 54 protection

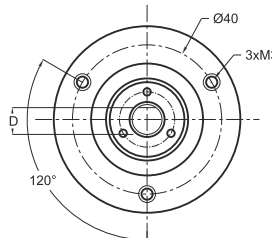


Technical Specifications

Type of Measurement	Magnetic incremental contactless
Resolution	2 ... 512 ppr.
Output Channels	A,B,Z or A,Ā, B,Ī, Z,Ż
Output Type	Push-pull, TTL Linedriver or HTL Linedriver
Supply Voltage	8-24 VDC (Standard) or 5 VDC (Optional)
Power Consumption (without load)	< 40 mA (24 VDC)
Electrical Connections	2.5m cable (Standard)
Max. Permissible Shaft Loading	Radial: 100 N Axial: 60 N
Max. Speed	3500 rpm
Shaft Diameter	Ø6 - 8 - 10 mm
Shaft Material	Stainless Steel
Case Diameter	Ø50 mm
Case Material	Aluminium / Steel
IP Degree	IP 54
Operating Temperature	-20°C ... +80°C
Storage Temperature	-30°C ... +90°C

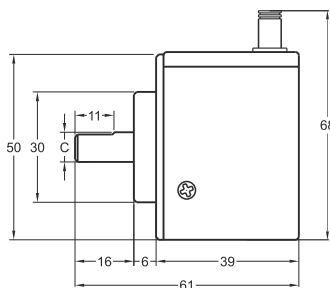


Shaft Type / Axial

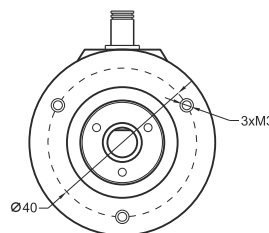


Push-Pull / TTL Linedriver Cable Output

- +V : Brown
- 0V : White
- GND : Shield
- Ch A : Yellow
- Ch B : Green
- Ch Z : Gray
- Ch A inv. : Blue
- Ch B inv. : Red
- Ch Z inv. : Pink



Shaft Type / Radial



HTL Linedriver Cable Output

- +V : Brown
- 0V : White
- GND : Shield
- Ch A : Yellow
- Ch B : Green
- Ch Z : Gray
- Ch A inv. : Blue
- Ch B inv. : Red
- Ch Z inv. : Pink

MRI 50	R (shaft)		
	C	D	
	Ø6mm	5,50mm	
	Ø8mm	7,30mm	
		Ø10mm	9,00mm

Model	Case Diameter	Case Type	Shaft Diameter	Output	Resolution	Output Channels	Supply Voltage	Connector / Cable	Cable Output
(example) MRI	50	A	R6	HLD	500	Z	V2	2M5	R
MRI	50mm	A : Clamping flange AW : Water proof	R6 : 6mm R8 : 8mm R10 : 10mm	LTP : Push-Pull LD : TTL Linedriver HLD : HTL Linedriver	2 ... 512 ppr.	Z : A, B, Z B : A, B	V1 : 5V DC V2 : 8-24V DC	2M5 : 2,5 meter cable 5M : 5 meter cable 8M : 8 meter cable 10M : 10 meter cable	R : Radial A : Axial